

SAILING INSTRUCTIONS

NORTH SOUND

M

A

20-24 MAR
2026

X

I

REGATTA



19th – 24th March 2026, The North Sound Maxi Regatta

SAILING INSTRUCTIONS

1 RULES

- 1.1 The event is governed by the *rules* as defined in the **2025-2028 Racing Rules of Sailing** (RRS).
- 1.2 If there is a conflict between languages, the English text will take precedence.
- 1.3 Add new RRS 60.4(a)(4) “as far as it alleges a breach of a rule in any document governing the event marked with a notation ‘[NP]’.”
- 1.4 RRS Appendix T ARBITRATION applies.

2 CHANGES TO SAILING INSTRUCTIONS

- 2.1 Any change to the sailing instructions will be posted on the WhatsApp Community before 09:15 on the day it will take effect, except that any change to the schedule of races will be posted by 18:30 on the day before it will take effect.

3 COMMUNICATIONS WITH COMPETITORS

- 3.1 Notices to competitors will be posted on the WhatsApp Community, and the sign-up details will be available at registration. The WhatsApp Community, with voluntary sign-up, will be used to keep competitors informed of the Race Committee's intentions, notices, results, protest details, and other information during the regatta. Sign-up details will be available to all competitors from the race office. *This changes RRS 61.4(b)(1).*
- 3.2 The Regatta Office will be located at the Bitter End Yacht Club.
- 3.3 The Race Committee intends to monitor and communicate with competitors on VHF 72.
- 3.4 Failure in transmitting or receiving VHF communications, errors, omissions or delays will not be grounds for a request for redress. *This changes RRS 61.4(b)(1).*

4 SIGNALS MADE ASHORE

- 4.1 No Signals will be made ashore.

5 CODE OF CONDUCT [DP]

- 5.1 Competitors and Support Persons shall comply with reasonable requests from event officials.

6 SCHEDULE OF RACES

- 6.1 The first warning signal will be displayed at 10:45 hrs each day.

7 CLASS FLAGS

- 7.1 The class flags for each class will be:



Maxi



Maxi Grand Prix

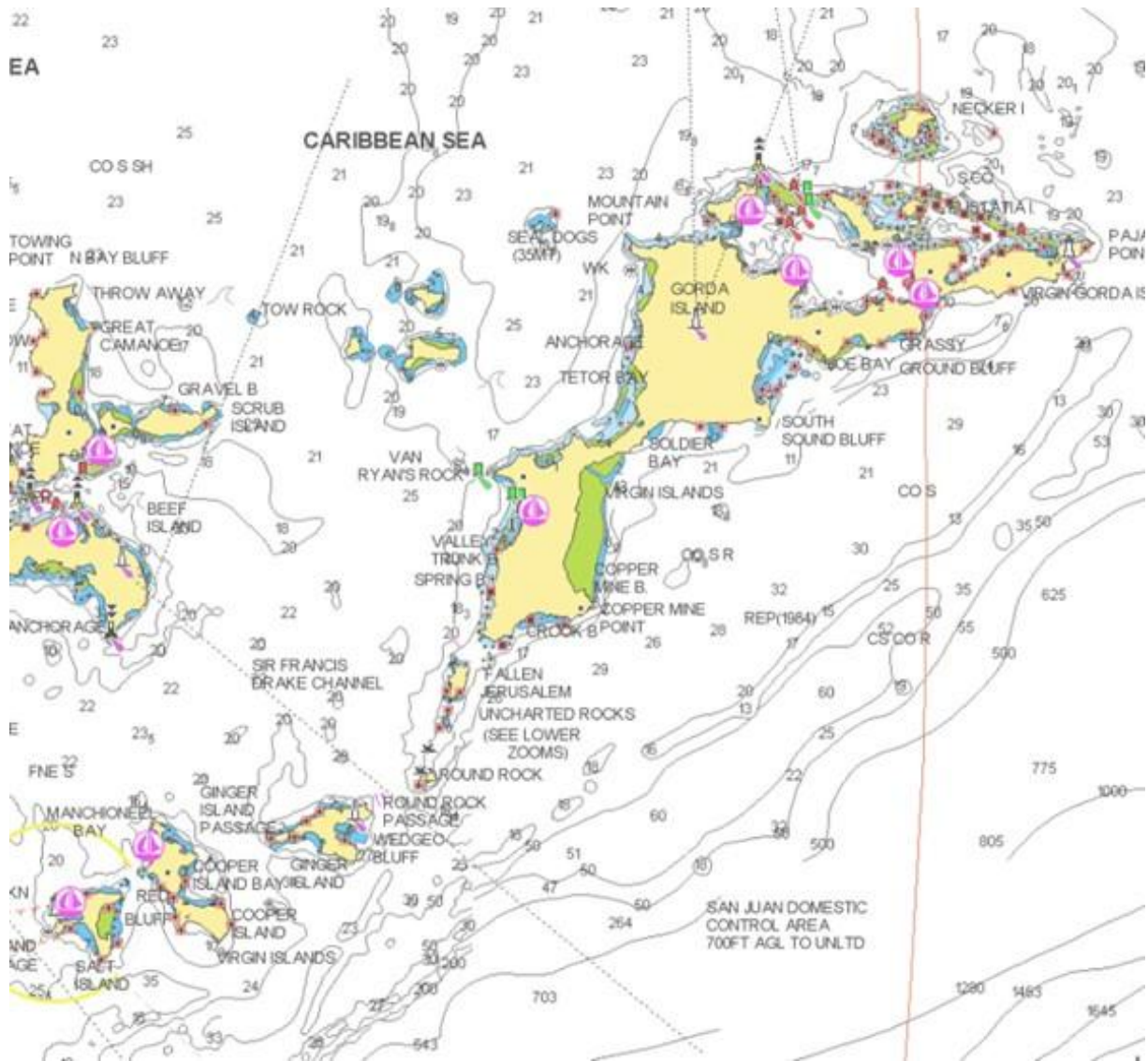


Performance

- 7.2 Boats are to display a class backstay flag. The flag shall be displayed on the backstay 2 metres above the deck. [DP]

8 RACING AREA AND COURSES

8.1



8.2 Windward-leeward course description and diagram details are in Sailing Instruction Appendix A. The approximate range and bearing from the Race Committee vessel to mark 1, and if used Mark H, will be advised via VHF 72 before the first warning signal.

8.3 Coastal course details will be provided at the daily skippers' briefing, including details of the starting area and the finish line position.

9 MARKS

9.1 Windward-leeward course marks 1, 1a, 4P and 4S, and Mark H will be anchored inflatable orange pyramid marks.

9.2 The starting and finishing marks for all races will be a Race Committee vessel and an anchored inflatable orange cylinder mark.

9.3 Coastal course marks will be described, with details of any Lat/Long positions, with a course diagram which will be provided at the daily skippers' briefing.

10 THE START

10.1 The starting line is between the staff displaying an orange flag on the Race Committee vessel and the course-side of the port-end mark.

10.2 Individual Recalls: If any part of a boat's hull is on the course side of the starting line at her starting signal and she is identified, the Race Committee will attempt to hail her sail number or boat name via VHF 72. Failure to hail her number or name, failure to hear such a hail, or the order in which boats are hailed will not be grounds for a request for redress. *This changes RRS 61.4(b)(1).*

- 10.3 A boat that does not start within 10 minutes after her starting signal shall be scored Did Not Start (DNS) without a hearing. *This changes RRS A5.1 and A5.2.*
- 11 CHANGING THE NEXT LEG OF THE COURSE**
- 11.1 To change the next leg of the course during a windward-leeward race, the Race Committee will move the original mark(s).
- 12 THE FINISH**
- 12.1 The finishing line is between the staff displaying a blue flag on the Race Committee vessel and either the course side of a finishing mark or as described in a coastal course diagram/detail.
- 13 TIME LIMIT**
- 13.1 The race time limit will be 15:30 hrs. Boats that fail to finish within 60 minutes after the first boat in her class sails the course and finishes will be scored DNF without a hearing. *This changes RRS 35 and A5.*
- 14 PENALTIES AND HEARING REQUESTS**
- 14.1 The Two-Turn penalty of RRS 44.1 is replaced by a One-Turn penalty.
- 14.2 The penalty for taking a Post Race Penalty under RRS Appendix T is 2 points.
- 14.3 The Protest Time Limit is 90 minutes after the last boat finishes the last race of the day or the Race Committee signals no more racing today, whichever is later. The time will be posted on the Official Notice Board and announced on the WhatsApp group. *This changes RRS 60.3(b)(1)(2).*
- 14.4 Hearing Request forms are available at the Regatta Office and shall be used to submit a Hearing Request or a request for redress.
- 14.5 Notices will be posted on the WhatsApp Community no later than 30 minutes after the Protest Time Limit to inform competitors of Arbitration or hearings in which they are parties or named as witnesses. Arbitration or hearings will be held at the Bitter End Yacht Club.
- 14.6 Notices of protests by the Race Committee will be posted as a message on the WhatsApp Community to inform boats under RRS 60.2(a)(2).
- 14.7 Redress Limitations:
- Redress shall not be given to a yacht for a greater number of races than she completed during the regatta; this changes RRS 61.4.
 - Actions by official boats, drones or helicopters shall not be grounds for requesting redress by a boat. *This adds to 61.4(b)(1).*
- 14.8 On the last day of the regatta, a request for reopening a hearing shall be delivered:
- within the protest time limit if the party requesting reopening was informed of the decision on the previous day:
 - no later than 30 minutes after the party requesting reopening was informed of the decision on that day.
- 15 SAFETY REGULATIONS [DP][NP]**
- 15.1 A boat that retires from a race shall, at the first reasonable opportunity, notify the Race Committee via VHF 72 or via phone, +44 (0)7525 159140.
- 15.2 A boat not leaving the harbour or not intending to race shall inform the Race Committee as soon as practicable, preferably before 09:30 hrs that day via phone, +44 (0)7525 159140.
- 16 REPLACEMENTS OF CREW [DP][NP]**
- 16.1 Changes of registered crew members, submitted a registration, are allowed with prior written notice before 09:30 hrs the day the change(s) take place. A yacht's crew shall remain the same for the day, other than in case of emergency, if communicated to the Race Committee.
- 16.2 In the event that the crew, guests, or personnel change on board a boat during the regatta, each new person shall sign the Waiver of Liability Form before participating in any race. The updates shall be emailed or delivered to the Race Committee.
- 17 EQUIPMENT AND MEASUREMENT CHECKS [DP]**
- 17.1 At the discretion of the Race Committee, a boat or equipment may be inspected at any time for compliance with the class rules, notice of race and sailing instructions.
- 18 OFFICIAL VESSELS**
- 18.1 Official vessels will be identified by a white flag with the regatta logo.

19 SUPPORT VESSELS AND DRONES

See Notice of Race 12.

20 TRASH DISPOSAL [DP]

See RRS 47.

21 HAUL-OUT

See Notice of Race 14.

22 TROPHIES AND PRIZES

The trophies to be awarded are as per the Notice of Race 11.

23 RISK STATEMENT

The safety of each boat and its crew is the sole responsibility of the captain, who shall ensure that the boat is in sound, seaworthy condition and manned by an experienced, physically capable crew. Neither the establishment of regulations nor the inspection of a boat in any way limits or reduces the complete and unlimited responsibility of the captain.

It is the sole and inescapable responsibility of each boat to decide whether to start or continue racing. See RRS 3, Decision to Race. RRS 3 states: "The responsibility for a boat's decision to participate in a race or to continue racing is hers alone". Sailing, by its nature, is an unpredictable sport and therefore inherently involves an element of risk. By taking part in the event, each competitor agrees and acknowledges that:

- i. They are aware of the inherent element of risk involved in the sport and accept responsibility for the exposure of themselves, their crew and their boat to such inherent risk whilst taking part in the event;
- ii. They are responsible for the safety of themselves, their crew, their boat, and their other property, whether afloat or ashore;
- iii. They accept responsibility for any injury, damage or loss to the extent caused by their own actions or omissions;
- iv. Their boat is in good order, equipped to sail in the event, and they are fit to participate;
- v. The provision of a race management team and other officials and volunteers by the event organiser does not relieve them of their own responsibilities;
- vi. The provision of support vessel cover, if any, is limited to such assistance, particularly in extreme weather conditions, as can practically be provided in the circumstances;
- vii. It is their responsibility to familiarise themselves with any risks specific to this venue or this event drawn to their attention in any rules or information produced for the venue or event, and to attend any safety briefing held for the event.

24 INSURANCES

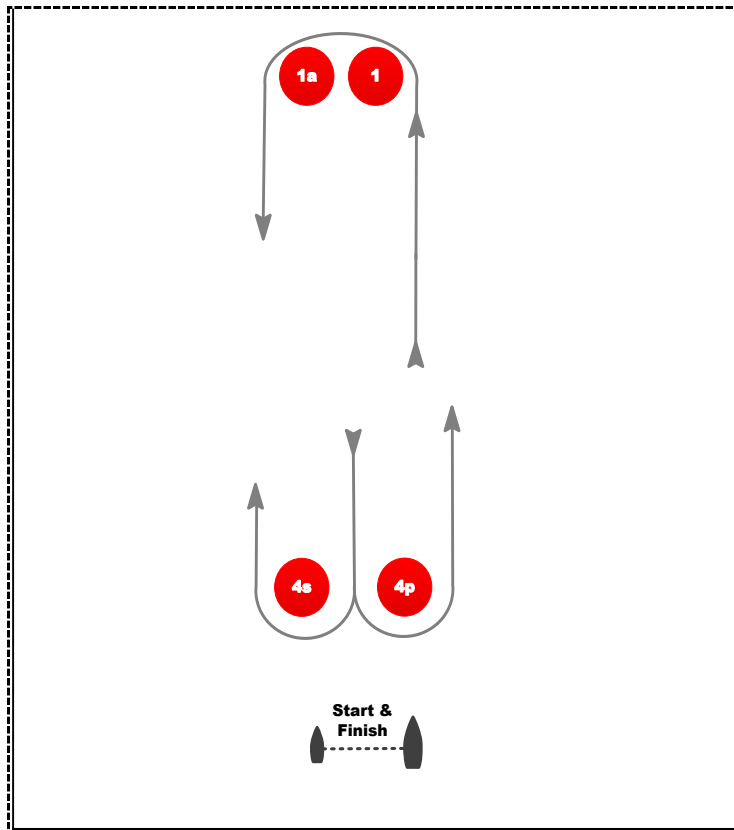
See Notice of Race 16.

SAILING INSTRUCTIONS - APPENDIX A

Windward-Leeward Courses:

Numeral Pennant 1 - Start, 1-Port, 1a-Port, Gate 4s/4p, 1-Port, 1a-Port, Finish.

**Numeral Pennant 2 - Start, 1-Port, 1a-Port, Gate-4s/4p, 1-Port, 1a-Port, Gate-4s/4p, (cont.)
Mark H-Starboard, Finish line in Gorda Sound.**



Mark 4p will be approximately 0.1nm to windward of the Race Committee vessel.
The approximate distance and compass bearing to Mark 1 will be from the Race Committee vessel.
Mark 1a will be approximately 0.1nm at right angles to the course axis.
Mark H position will be advised by the Race Committee before the warning signal.